

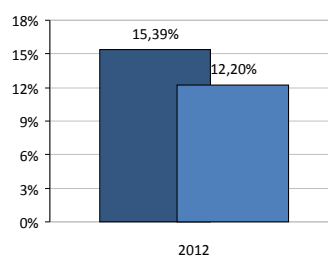
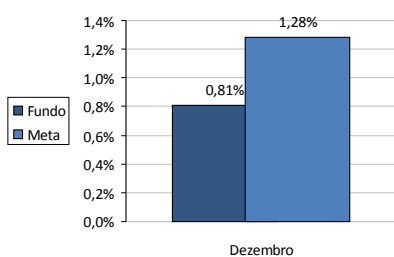


DEMONSTRATIVO DE RESULTADOS DO FUNDO PREVIDENCIÁRIO Dezembro 2012

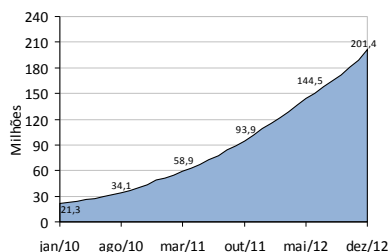
Rentabilidade

| Dezembro | |
|----------|--------|
| Fundo | Meta |
| 0,81% | 1,28 % |

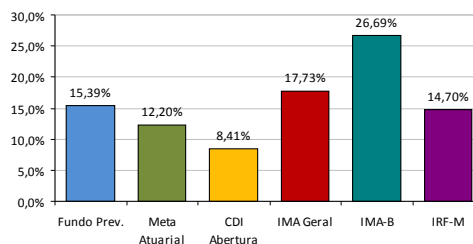
| 2012 | |
|--------|--------|
| Fundo | Meta |
| 15,39% | 12,20% |



Patrimônio



Indicadores 2012



Contribuições

| Período | Contribuição | | Renda Imobiliária | Renda Mobiliária | | Total |
|-------------------|----------------------|----------------------|-------------------|----------------------|-------------------|----------------------|
| | Servidor | Patronal | | Carteira | Dividendos | |
| jan/12 | 2.131.636,19 | 2.131.636,19 | 31.395,57 | 1.577.200,84 | | 5.871.868,79 |
| fev/12 | 2.434.817,92 | 2.434.543,36 | 56.236,49 | 1.723.101,50 | 1.557,69 | 6.650.256,96 |
| mar/12 | 2.494.551,49 | 2.494.551,49 | 57.396,63 | 1.714.049,61 | | 6.760.549,22 |
| abr/12 | 2.551.315,67 | 2.551.315,67 | 119.356,77 | 3.293.165,37 | 174.217,35 | 8.689.370,83 |
| mai/12 | 2.758.383,82 | 2.758.383,82 | 90.296,14 | 2.165.128,12 | 86.997,77 | 7.859.189,67 |
| jun/12 | 2.740.922,36 | 2.740.922,36 | 92.597,70 | 826.325,18 | 121,26 | 6.400.888,86 |
| jul/12 | 2.819.870,72 | 2.820.802,12 | 90.351,34 | 1.752.442,93 | 1.062,02 | 7.484.529,13 |
| ago/12 | 2.899.570,78 | 2.898.639,38 | 78.957,61 | 1.383.010,15 | 43.318,94 | 7.303.496,86 |
| set/12 | 2.950.353,75 | 2.950.155,45 | 69.024,79 | 1.155.175,69 | 1.017,80 | 7.125.727,48 |
| out/12 | 3.331.400,84 | 3.323.111,47 | 58.791,20 | 2.304.984,07 | | 9.018.287,58 |
| nov/12 | 3.828.612,64 | 3.836.157,63 | 89.557,81 | 957.142,98 | 380,78 | 8.711.851,84 |
| dez/12 | 5.275.809,96 | 5.274.070,57 | 156.223,43 | 1.566.402,05 | 1.058,24 | 12.273.564,25 |
| Total 2012 | 36.217.246,14 | 36.214.289,51 | 990.185,48 | 20.418.128,49 | 309.731,85 | 94.149.581,47 |

